



MIPOLAM EVO

PVC-FREE HOMOGENEOUS FLOORING

gerflorusa.com



Gerflor[®]

HEALTHY INNOVATION. ALWAYS MIPOLAM.

Made in Germany from an exclusive blend of resins patented by Gerflor, MIPOLAM EVO is the best solution for clients looking for a PVC-free alternative. MIPOLAM EVO is the result of years of research carried out by our R&D experts to deliver a new generation of Mipolam homogeneous floors with continued focus on health and wellness. It provides the same superior technical and aesthetic performance as every Mipolam range.



STAIN BARRIER EASY MAINTENANCE MATTE EFFECT

Evercare™ surface treatment is a 100% non-porous surface, resistant to the harsh chemicals used in healthcare environments.



EASY TO INSTALL EASY TO COVE EASY TO WELD

Flexible and lightweight.
PVC-free welding rods.



STRONG ADHESION TO SUBSTRATE

Adheres easily and permanently due to exclusive blend of patented resins.



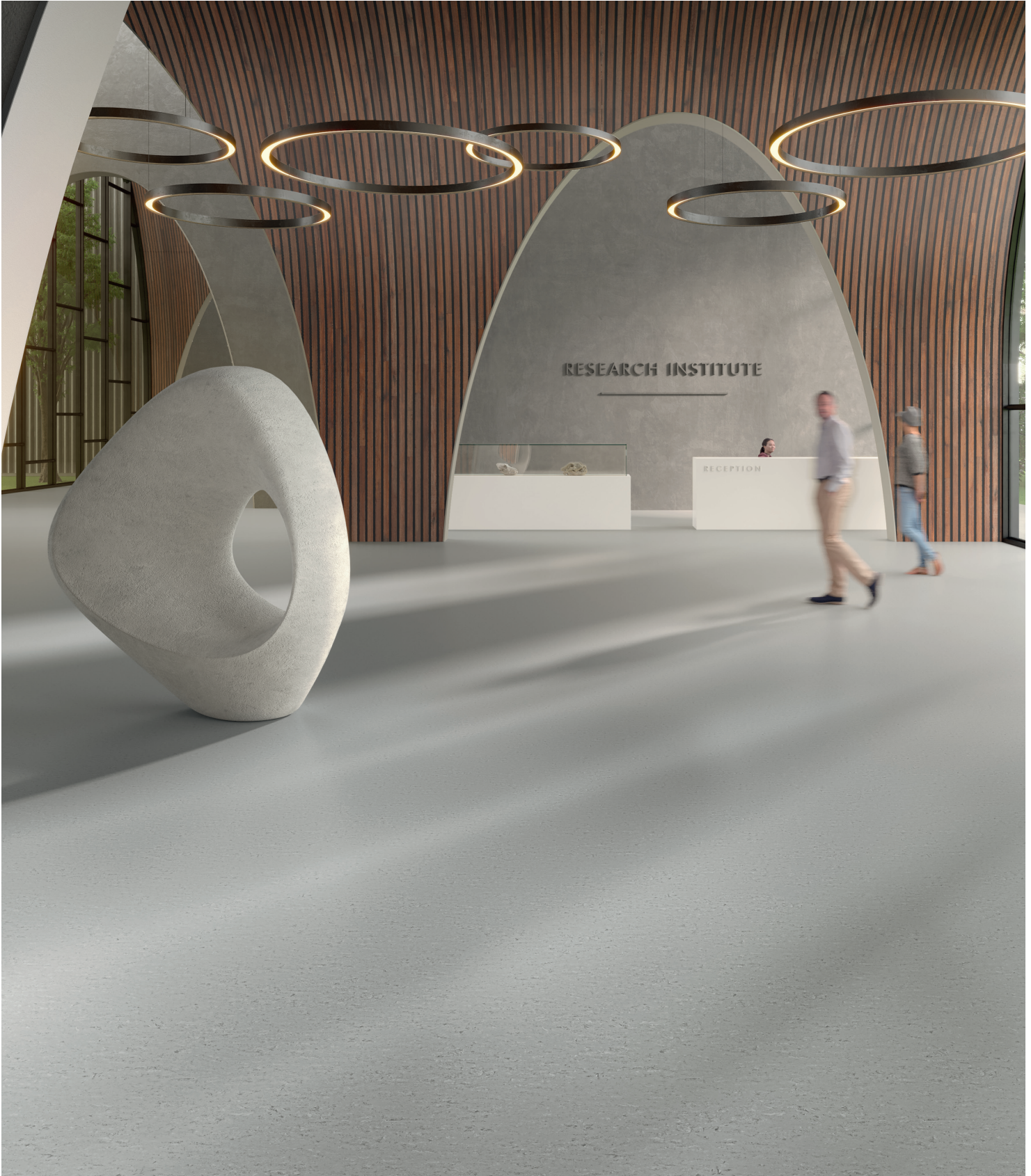
HIGH TRAFFIC RESISTANCE LONG LASTING DESIGN

R10 slip resistance rating.
0.08" (2.0mm) homogeneous construction.



INDOOR AIR QUALITY

Mipolam Evo was developed with the consideration of promoting individual health and wellness within the built environment. As such, it has extremely low VOC emissions: TVOC <math><10 \mu\text{g}/\text{m}^3</math> (after 28 days) according to ISO 16000-6.



MIPOLAM EVO



9005 Visby
NCS: 1005-Y40R / LRV: 70.4



9031 Kiruna
NCS: 2005-Y40R / LRV: 52.4



9063 Narvik
NCS: 5005-Y20R / LRV: 22.6



9045 Gello
NCS: 7005-Y50R / LRV: 9.5



9008 Lulea

NCS: 2000-N / LRV: 56.9



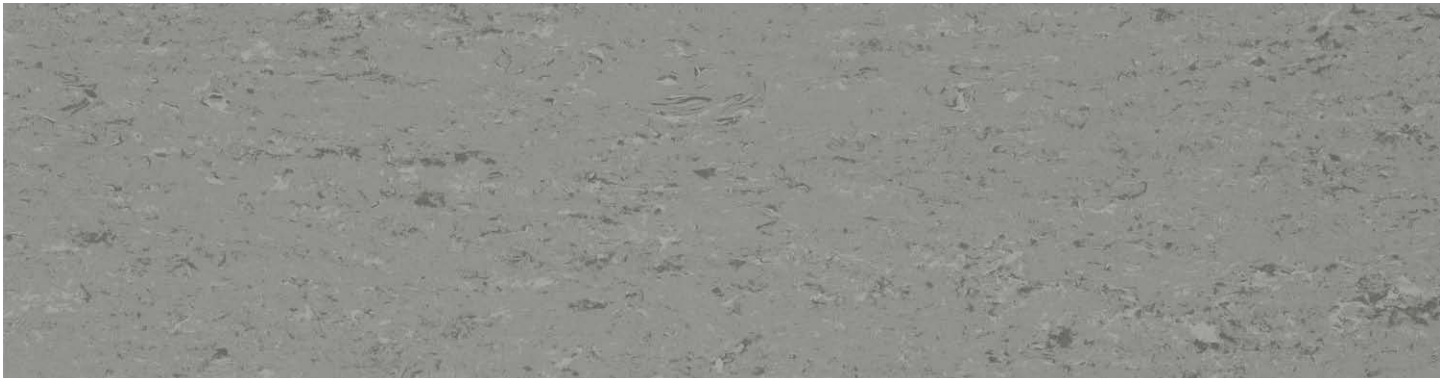
9009 Trondheim

NCS: 2500-N / LRV: 48.6



9029 Tromso

NCS: 4000-N / LRV: 31.7



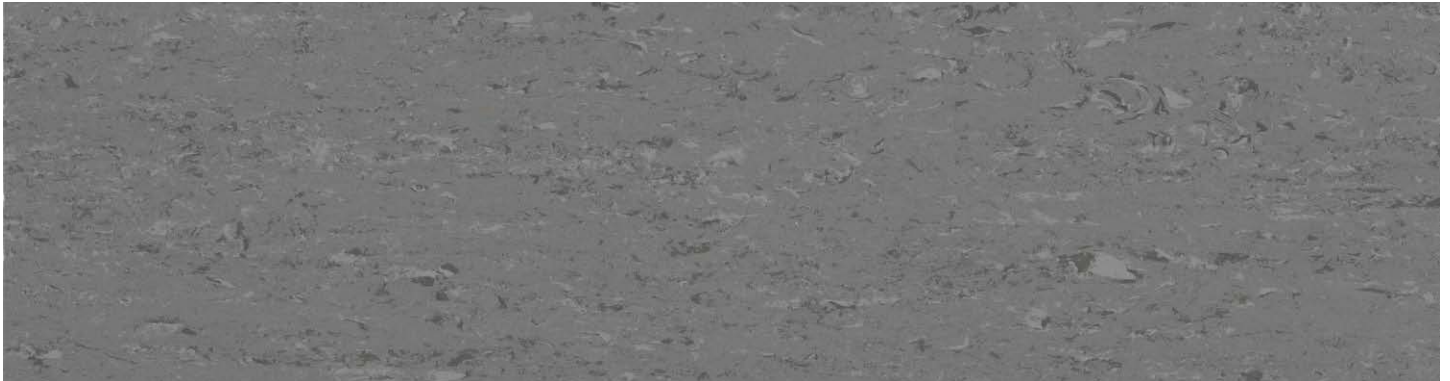
9030 Uppsala

NCS: 4502-R / LRV: 26.4

MIPOLAM EVO



9027 Oslo
9009 Trondheim



9050 Malmo
NCS: 6000-N / LRV: 16.2



9044 Bergen
NCS: 6502-Y / LRV: 12.6



9006 Stockholm
NCS: 2010-B / LRV: 48.7



9055 Goteborg
NCS: 3050-Y30R / LRV: 14.8



9032 Copenhagen
NCS: 1050-Y10R / LRV: 59.9



9027 Oslo
NCS: 2020-G40Y / LRV: 47.4

DESCRIPTION	STANDARDS	REQUIREMENTS	MIPOLAM EVO
PRODUCT DESCRIPTION			
Reference Specification	ASTM F1913	-	Meets Requirements
Construction	-	-	PVC-Free Homogeneous Sheet Flooring
Surface Treatment / Maintenance	-	-	Evercare® / No wax for life
Gauge Total Thickness	ASTM F386	> 0.075"	0.080" (2.0 mm)
Roll Width	-	-	6' 6" (2.0 m)
Roll Length	-	-	66' (20 m)
Coverage / Roll	-	-	430.6 ft ² (40 m ²)
Weight	-	-	0.53 lb/ft ² (2.6 kg/m ²)
PERFORMANCE			
Static Load Resistance	ASTM F970	≤ 0.005"	Meets Requirements
Abrasion	ASTM F510	-	Meets Requirements
Indentation - Residual	ASTM 1914	≤ 0.007"	Meets Requirements
Flexibility	ASTM F137	> 1.5"	Meets Requirements
Chemical & Stain Resistance	ASTM F925	-	Meets Requirements
Resistance to Heat	ASTM F1514	ΔE ≤ 8	Meets Requirements
Resistance to Light	ASTM 1515	ΔE ≤ 8	Meets Requirements
Coefficient of Friction	ASTM D2047	-	0.59 (leather) / 0.92 (neolite)
Fire Rating - Flame Spread	ASTM E648	Class 1	Meets Requirements
Fire Rating - Smoke Evolution	ASTM E662	450 or less	Meets Requirements
ENVIRONMENT HEALTH & SAFETY			
Bacterio-Static**	ISO 22196	-	Inhibits spread of infections at 99%
Viro-Static**	ISO 21702	-	Inhibits growth of virus of 99.7% after 2 hours
Manufacturing Plant Certifications	ISO 14001, 45001, 50001	-	Environment, Healthy & Safety, Energy
Environmental Product Declaration (EPD)	LEED v4 M+R	-	Product-Specific Type III
Material Ingredients: Health Product Declaration (HPD)	LEED v4 M+R	-	Self-Declared
No Harmful Chemicals	European Chemicals Agency (ECHA)	-	100% REACH Compliant
Sourcing of Raw Material: Recycled Content	Average Pre-Consumer Content	-	25%
Indoor Air Quality	California Standard 01350	-	FloorScore® Certified
Production Waste	In-Plant Recycling	-	100% Manufacturing Waste Recycled
TVOC after 28 days	ISO 16000-6	-	< 10 µg/m ³
WARRANTY	10-year limited manufacturer warranty when installed in accordance with Gerflor's installation instructions on gerflorusa.com		

Printed: March 2025

*Rubber leaves indelible stains on synthetic floorings: do not use mats with rubber backing and replace tubular furniture feet with those made of PVC or polyamide. Place mats of sufficient length at entrances to reduce outside sources of dirt.

** The best defense against the spread of infections is the implementation of an effective cleaning method.

